

Ride Gwinnett



Gwinnett



CITY OF SNELLVILLE



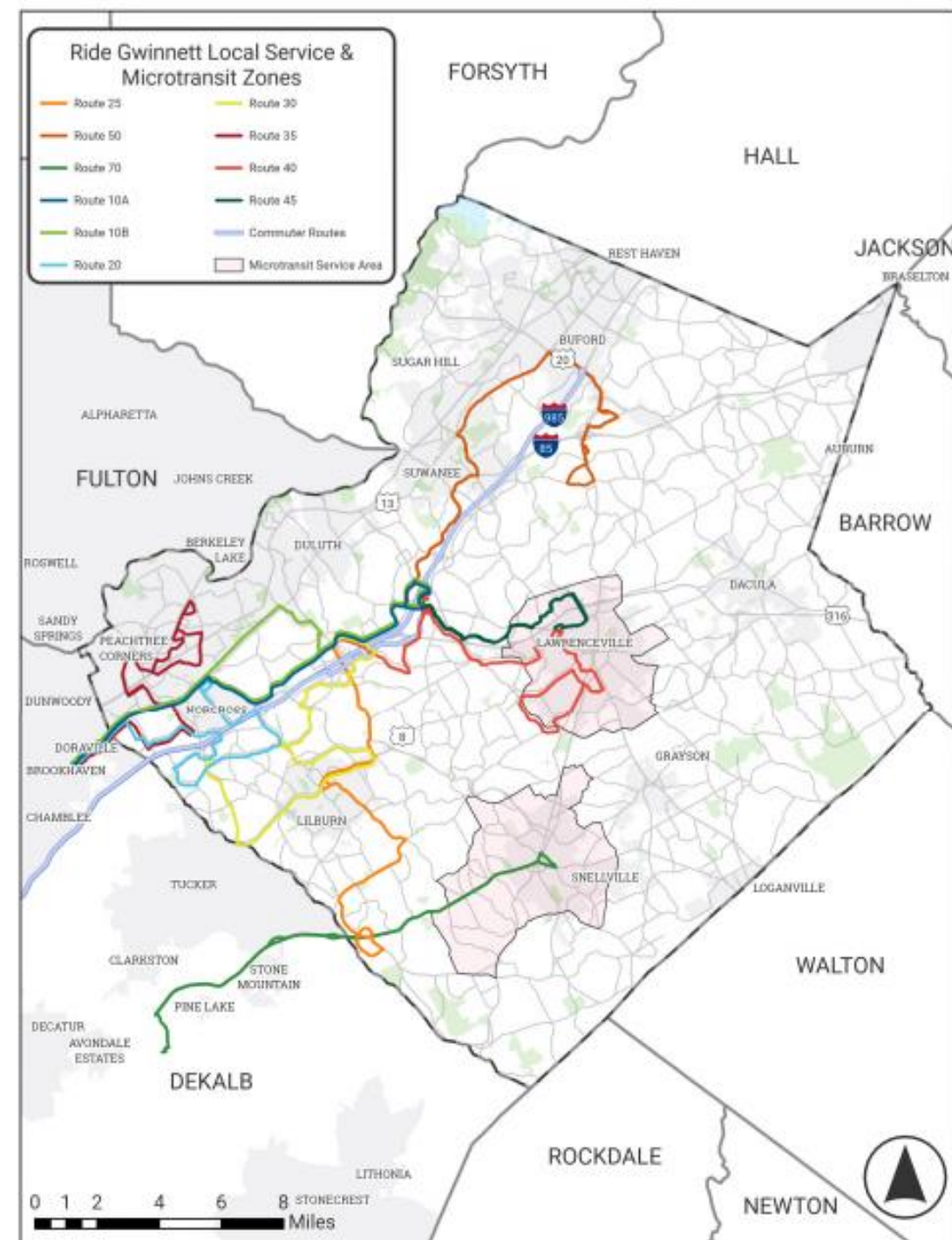
RIDE
Gwinnett

ATL

RideGwinnett.com

Ride Gwinnett Services

- In 2023, we added **mobility options**.
 - **3 new local routes.**
 - **2 Microtransit zones.**
- Increased **employment and economic opportunities.**
- More than **50%** of Gwinnett residents will have access to Ride Gwinnett.





2
zones

22
square miles in
Snellville

18
square miles in
Lawrenceville

Microtransit Service

- Launched in 2023.
- Flexible, on-demand shared ride service.
- Rides must begin and end within microtransit zone.
- Monday – Saturday, 6AM-8PM.
- Fare costs \$3/ride.
- Rides hailed over the phone or through the Ride Gwinnett app.
- Current zones include parts of Snellville and Lawrenceville.



Lessons Learned

- Highlights:

- First mile, last mile connectivity
- Simplicity of use
- Flexibility

- Challenges:

- Forecasting demand
- Technology

(Adopted) Transit Development Plan



Plan Modes

Shared Ride	County Ride	Quick Ride	Rapid Ride	Airport Ride
A flexible on-demand zone-based transit service	Regular bus with set routes and schedules	High-frequency service with bus priority improvements and enhanced stops	High-capacity service with dedicated right-of-way and stations	Limited stop service to Hartsfield-Jackson International Airport



Shared Ride

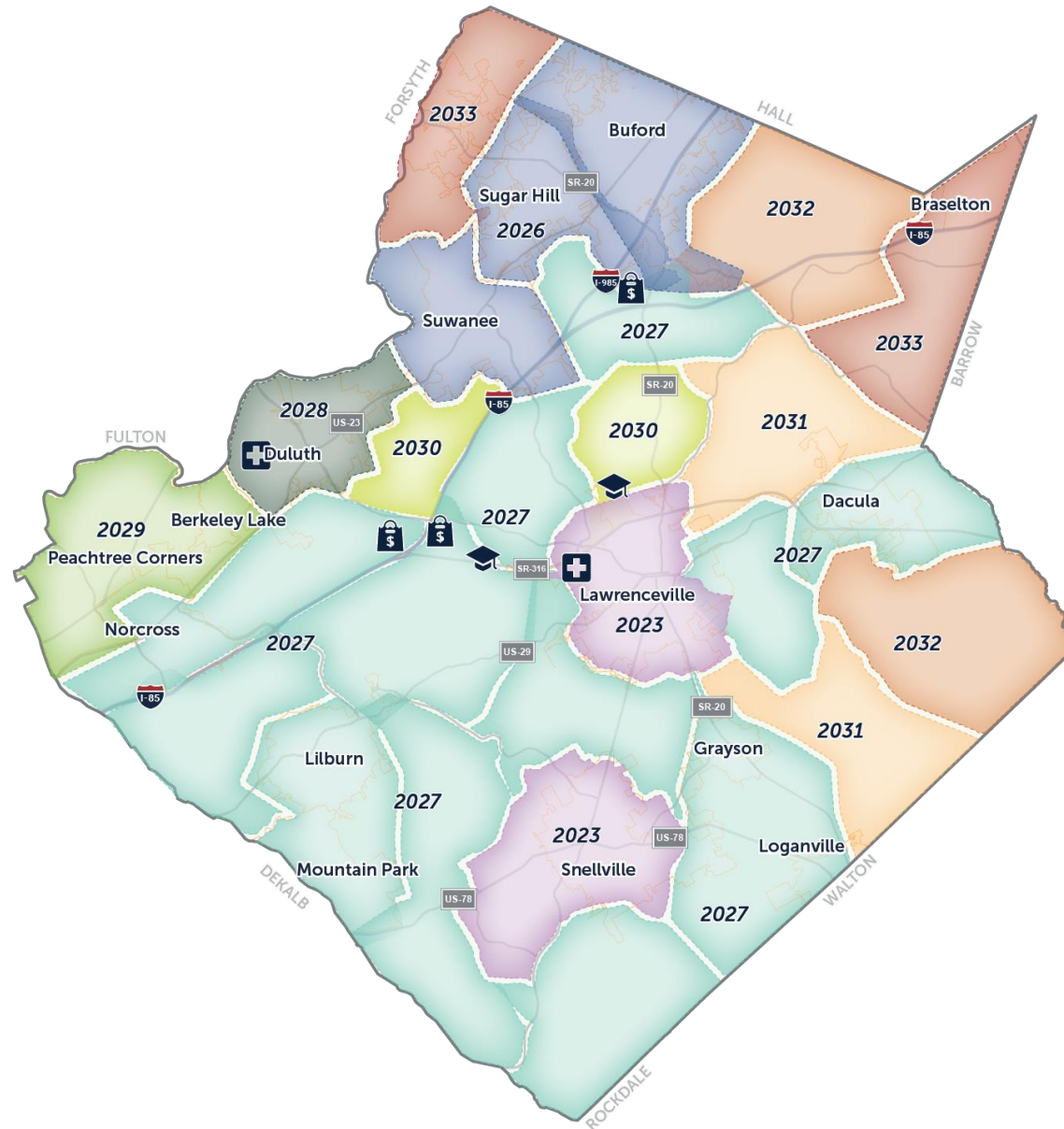
Zone Implementation

Shared Ride is an on-demand service — a flexible option for the entire County (a.k.a. microtransit). Riders can use an application to request their trip and pay for their fare. Shared Ride zones will serve the entire County by 2033.



Zone Implementation Year:

2023	2026	2027
2028	2029	2030
2031	2032	2033





Questions?